



JUST FOR KIDS

10 and under

BREAKFAST - ANYTIME

NEW! Mousing Around

Chocolate Chip Pancakes

mouse-shaped pancake loaded with chocolate chips, whip cream, chocolate sauce and powdered sugar3.29

K-1 One Egg

with two bacon strips and one slice of toast3.29

K-2 Kids Pancakes

five silver dollar pancakes with two bacon strips3.29

M & M Smile Cake

lots of M&M's melted in a big buttermilk pancake topped with a whipped cream smile3.29

K-3 French Toast

two sticks of French toast and two bacon strips3.29

No Substitutions

LUNCH and DINNER

Fresh Fruit Dippers

seasonal fresh fruit with low-fat strawberry yogurt for dipping3.39

Jr. Chicken Fingers

(all white meat) with fries*4.39

Jr. Chicken Nuggets

with fries*3.29

Mini Corn Dogs

with fries*3.49

Jr. Hot Dog

with fries*3.39

Mini Cheeseburgers (2)

with fries*3.99

Mini Hangerber (2)

.....3.69

Jr. Grilled Cheese Samich

with fries*3.09

Jr. Cheesy Quesadilla

with fries*2.79

NEW! Pizza Fries

loaded with pizza sauce and gooey mozzarella cheese2.99

Jr. Macaroni & Cheese

.....3.39

Jr. Pasta Marinara

with meatball3.39

without meatball2.89

Oodles of Just Noodles

a bowl of buttered pasta2.79

Jr. Shrimp

with fries*4.59

NEW! Bowtie Alfredo

with parmesan cream sauce, served with bread3.19

HEALTHY SIDES

YOUR CHOICE • Applesauce • Fresh fruit • Corn • Cottage Cheese

*Instead of fries, side choices on request • Mandarin Oranges • Low Fat Strawberry Yogurt

DRINKS

O...O...Oreo® Shake2.39

Jr. Black Cow

Rootbeer float2.19

Chocolate, Vanilla or Strawberry Shake

.....2.19

2% Milk1.69

Chocolate Milk1.89

Hot Chocolate2.09

Jr. Juice2.09

• Orange • Apple

BOTTOMLESS

Strawberry Lemonade

with juicy strawberries1.39

Flavored Soft Drinks1.19

• Cherry Coke • Cherry Sprite • Vanilla Coke

Soft Drinks99

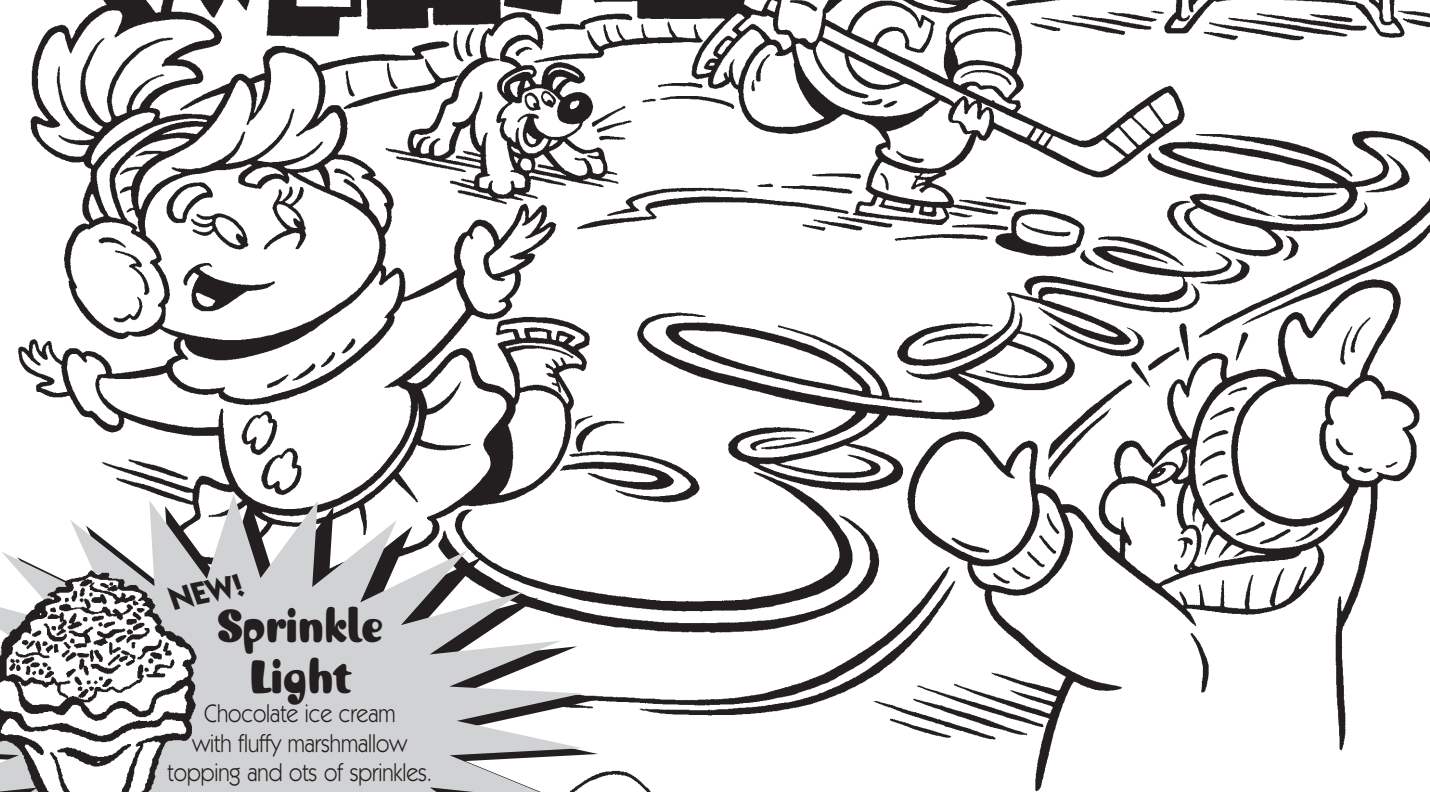
SEE FRONT FOR KIDS SUNDAE TREATS



KIDS EAT FREE MONDAYS AFTER 4PM

From Kid's Food Menu (for kids 10 and under) when an adult purchases a sandwich or entree. (Beverages and sundaes not included. Please limit 2 children with each adult purchase - 1 meal per child)

FREE BIRTHDAY SUNDAE and a Song!



NEW! Sprinkle Light

Chocolate ice cream with fluffy marshmallow topping and lots of sprinkles. Comes with whistle light key fob. 3.39



Whistle Light Key Fob Sold separately \$1.50 each

SUNDAE FUNNIES



OREO Cookie Mouse

Oreo cookie ears, a cherry nose, M&M eyes, vanilla ice cream, chocolate syrup, and a whipped cream smile.2.39



Yummy Gummy

Vanilla ice cream, chocolate syrup, whipped cream, and a little Oreo dirt. Look out for the gummy worm!2.39



Brownie Bear

Brownie ears, cherry nose, M&M eyes, vanilla ice cream, chocolate syrup, and whipped cream smile.2.39



Cherry Bomb

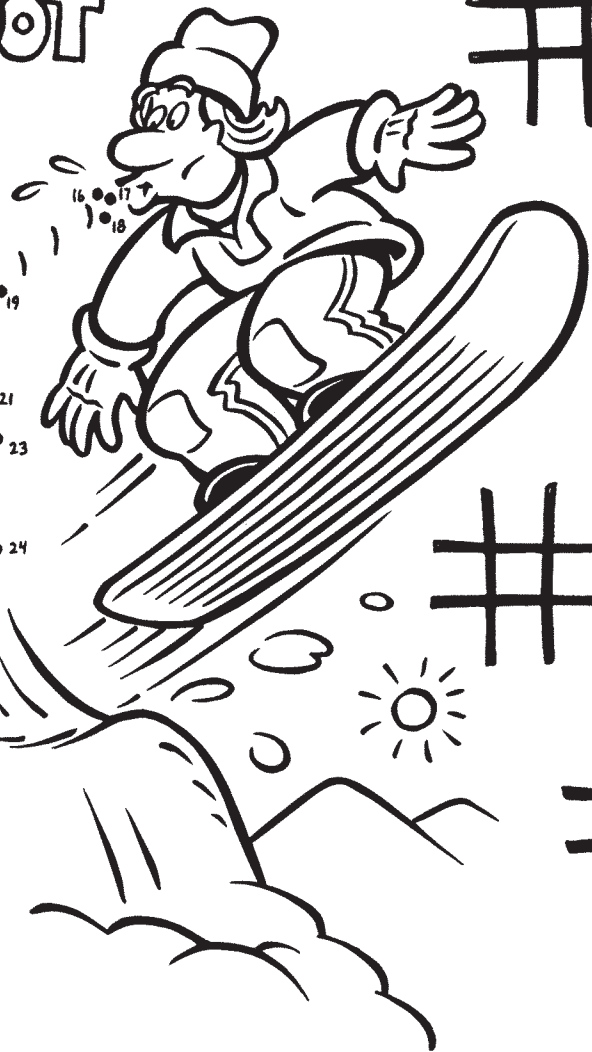
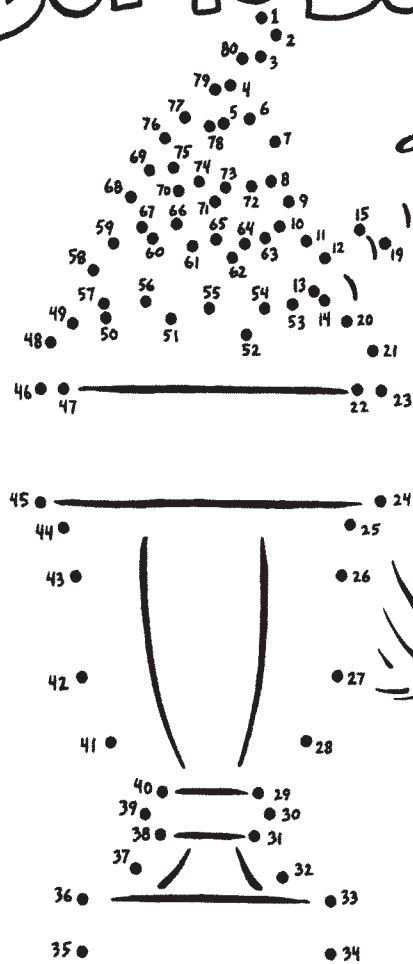
Cracklin' pop rocks exploding on whipped cream with a cherry, all on a chocolate shell over vanilla ice cream.2.39



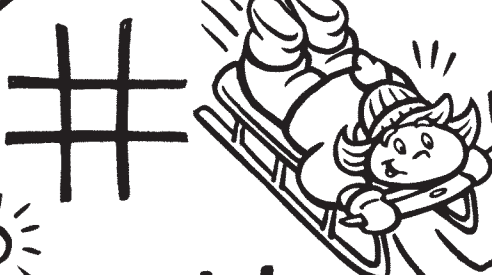
Colonial Clown

Vanilla ice cream, chocolate syrup, a sugar cone hat, a cherry nose, M&M eyes, and whipped cream smile.2.39

DOT-TO-DOT



Draw a Snowman Face →



Path-Finder

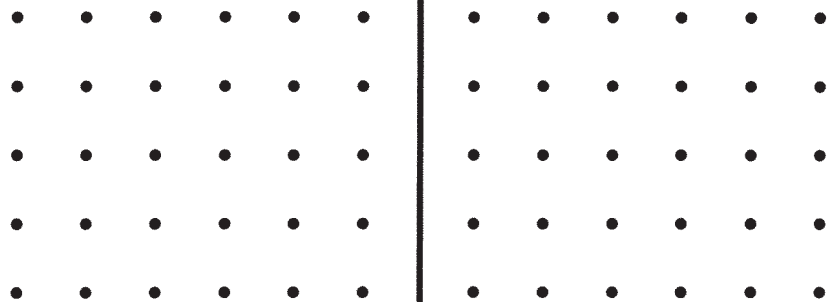
HELP THE SLEDDER FIND THE PATH TO COLONIAL ICE CREAM!



Boxes! Rules: Two people can play. The first player begins by drawing a line between two dots. Then the second player does the same. Continue taking turns drawing lines between dots until one player has completed a box; that player will place his initials inside the box and take another turn until the end of the game, when the player with the most boxes wins!

Game 1

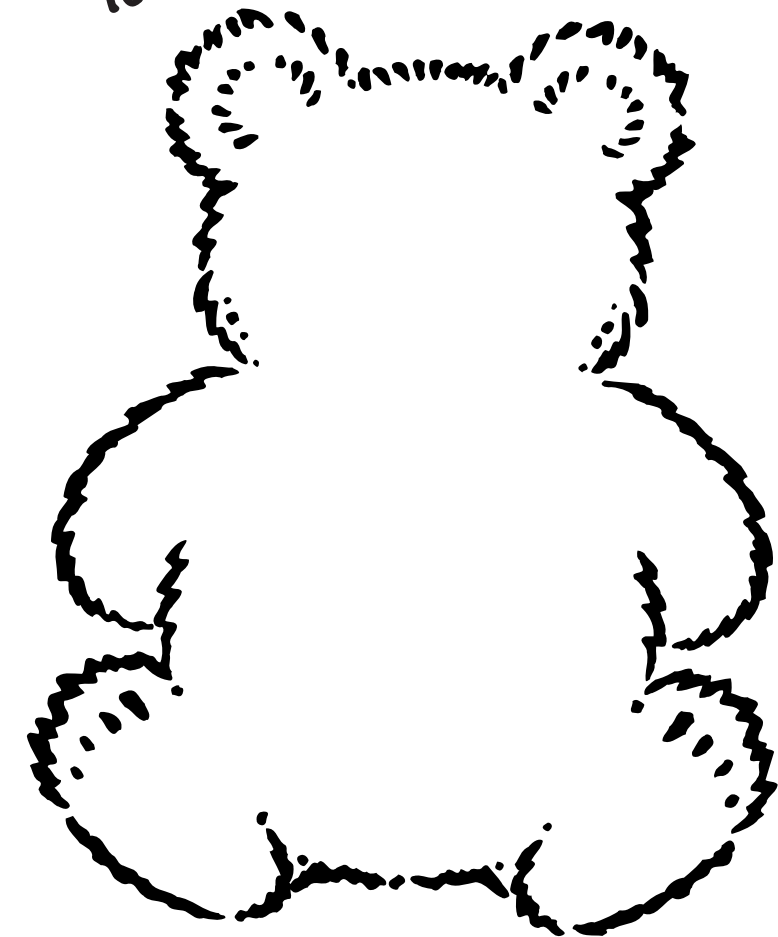
Game 2



BREAKFAST • LUNCH • DINNER

Visit us at www.colonialcafe.com

Make your own teddy bear!



Dot-to-Dot



Tic-Tac-Toe



Draw a Crazy Face



Path-Finder

FIND THE PATH TO THE CHERRY TOP!

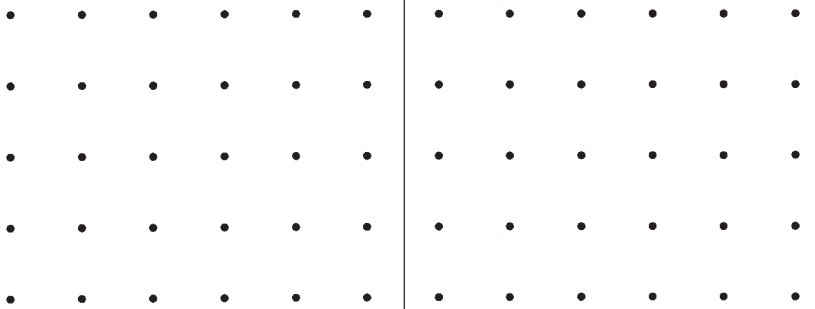
START



BOXES! Rules: Two people can play. The first player begins by drawing a line between two dots. Then the second player does the same. Continue taking turns drawing lines between dots until one player has completed a box; that player will place his or her initials inside the box and take another turn until the end of the game, when the player with the most boxes wins!

GAME 1

GAME 2



BREAKFAST • LUNCH • DINNER

Visit us at www.colonialcafe.com

Such a treat this time of year!

Guess what it is using the letters below.

 e e

_____ e _____

_____ e _____

p i n t h e p c u p i n
a d e p r p e r s